



PANEL 1

THE INTEGRATED MARITIME POLICY. WAY AHEAD

CFCA PRESENTATION



- An introduction to the CFCA
- BFT: a model for integrated maritime policy
- Fisheries inspection services
- Problems and solutions



INTRODUCTION OF THE CFCA WHO ARE WE?



- Independent EU body
- Created by Regulation (EC) 768/2005
- Operative from 2007
- Relocated to seat in Vigo, Spain from July 2008



OBJECTIVE



Ensure uniform and effective application of the rules of the Common Fisheries Policy by the Member States.



MAIN ACTIVITIES OF THE CFCA



The Agency's activities are:

- operational coordination and cooperation between MS for fishing control and inspection activities.



- assisting MS and Commission in their control tasks through capacity building

MAIN TASKS OF THE CFCA

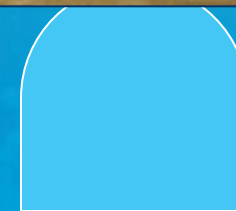
- Working together towards a culture of compliance
- Promote a level playing field
- Ensure effective and harmonised application of the CFP rules
- Combat IUU Fishing



INTRODUCTION OF THE CFCA OUR MEANS



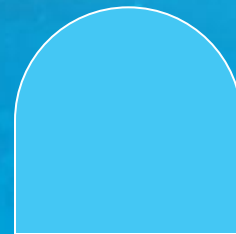
- Total budget approximately 9 million
- Staff: 55
- Joint charter of large FPV “Jean Charcot” on behalf of MS for North Atlantic waters and Mediterranean Sea



BLUEFIN TUNA BFT

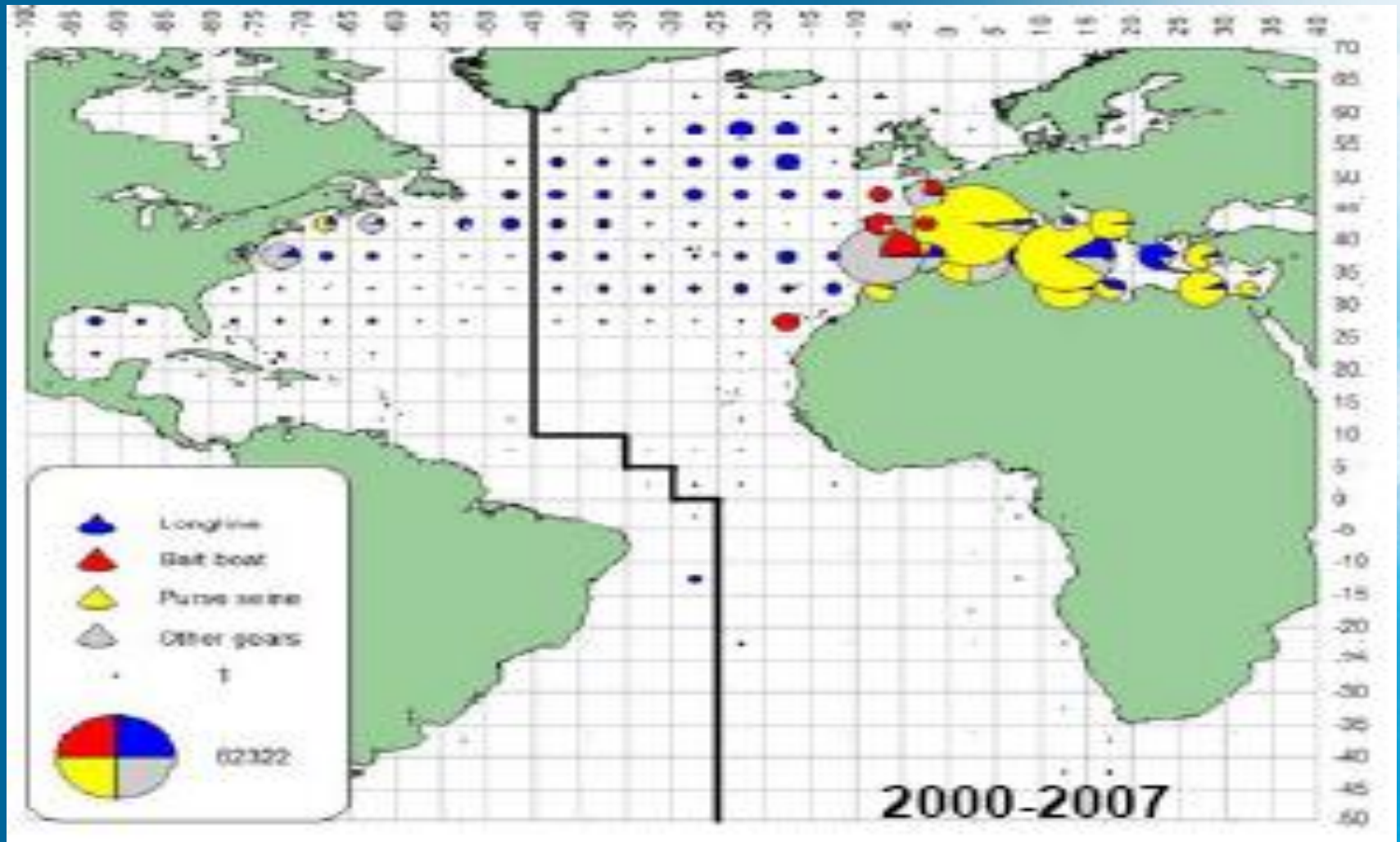


- Biological characteristics
- Stock area
- Who exploits
- Who manages





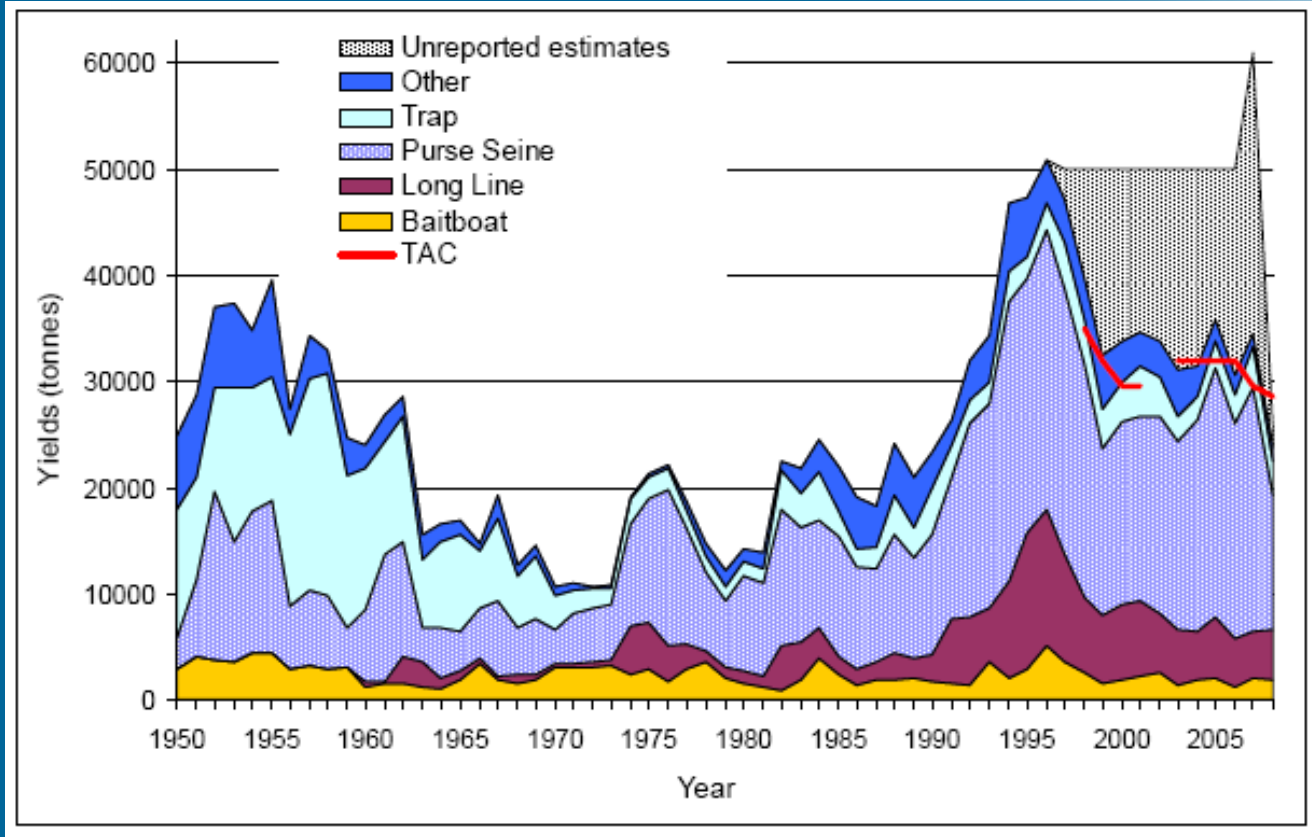
BFT CATCH DISTRIBUTION



Geographic distribution of bluefin tuna catches per 5x5 degrees and per main gears.



BFT CATCHES BY GEAR

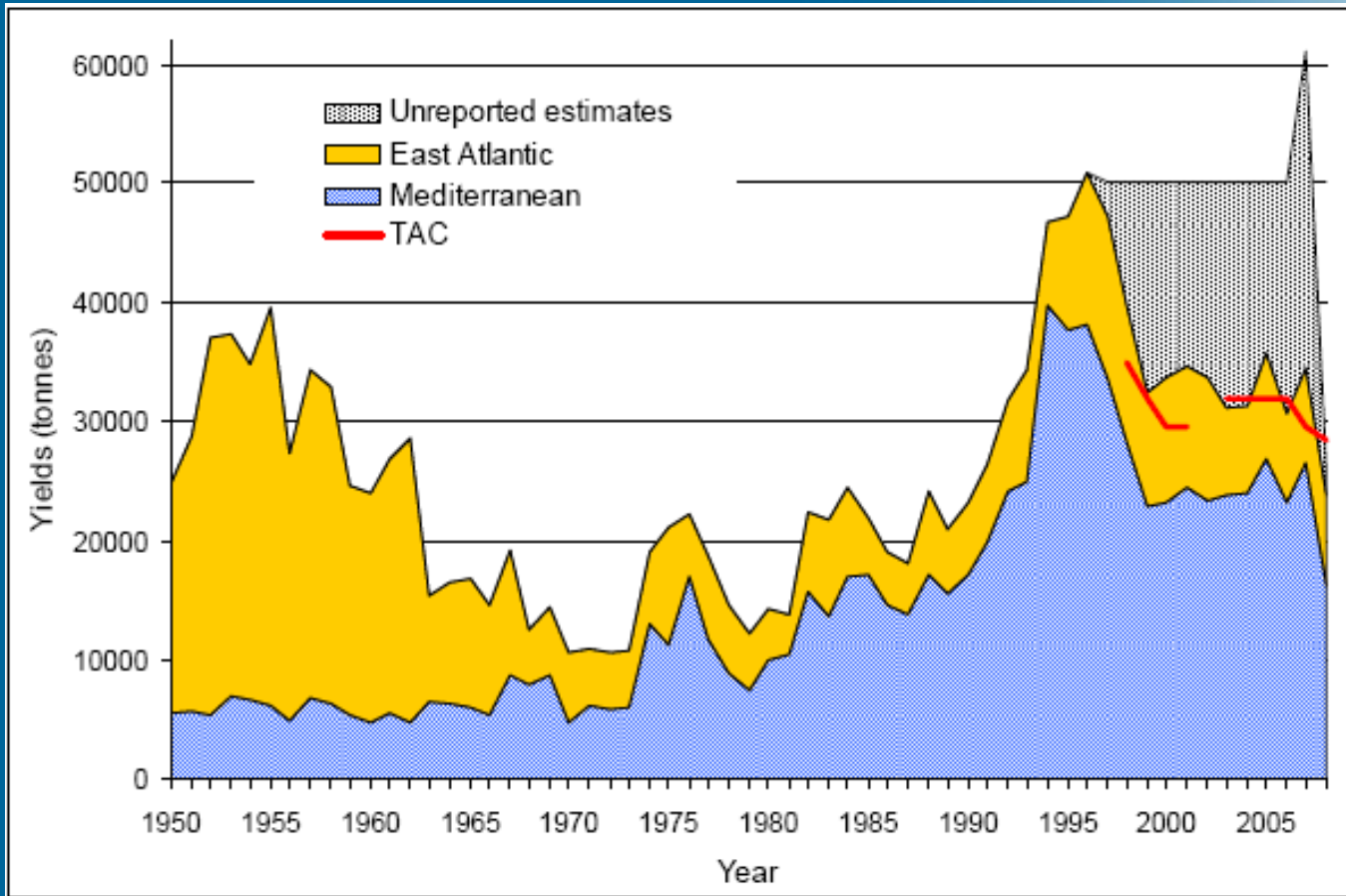


Reported catch for BFT Est from task I data from 1950 to 2008 split by main gears





BFT BY CATCH AREA



Reported catch for BFT East from task I data from 1950 to 2008
split by main geographic areas

BFT WHO IS FISHING?



A COMPLEX FISHERY:

Main Players:

ICCAT Contracting Parties

EU

Japan

Turkey

Croatia

Morocco

Tunisia...

Gears involved

Purse seine

Longline

Traps

Trawls...





BFT A GLOBAL ECONOMIC ACTIVITY





BFT WHO IS MANAGING THE STOCK?



ICCAT

International Commission for the Conservation of Atlantic Tunas:

- RFMO
- Convention Area (Atlantic incl. Med)
- Convention species (Tunas, swordfish, etc)
- Aim rational conservation and management
- CPCs obligations
- BFT multi-annual recovery plan
- MCS from catch to marketing





BFT ICCAT RECOVERY PLAN



Relevant EU Legislation:

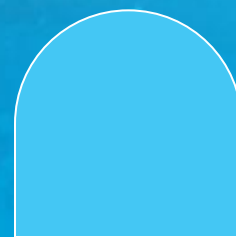
- Council Regulation (EC) No 302/2009 of 06 April 2009 establishing a multi-annual recovery plan for bluefin tuna in the Eastern Atlantic and Mediterranean
- Commission Decision (2009,296, EC) of 25 March 2009 establishing a Specific Control and Inspection Programme related to the recovery of bluefin tuna in the Eastern Atlantic and Mediterranean
- Decision N°2009/015 of the Executive Director of the Community Fisheries Control Agency of 1 April 2009 establishing a Joint Deployment Plan for 2009 and 2010





MS INSPECTION SERVICES

- **Member States are responsible for the control, inspection and surveillance at sea in Community waters, ICCAT Convention Area and in Community Ports in relation to:**
 - **Fishing and supporting activities**
 - **Landings, transfers, transports, transshipments, processing, marketing and exports**
 - **Farming activities**

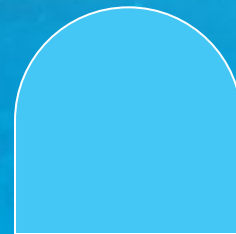




MS INSPECTION SERVICES

To this end, Member States must:

- Designate competent authorities
- Provide mandate
- Provide the means necessary to achieve compliance





MS COMPETENT AUTHORITIES

Cyprus- Ministry of Agriculture, Natural Resources and Environment Department of Fisheries and Marine Research

France - MAP, Direction des Pêches Maritimes, Affaires Maritimes, Navy

Greece - Ministry of Mercantile Marine, Aegean and Island Policy; Fisheries Department of Hellenic Coast Guard

Italy - MIPAF, Guardia Costiera

Malta - Ministry for Resources and Rural Affairs – Fisheries directorate

Portugal - MADRP, Directorado Geral das Pescas e Aquicultura

Spain - MARM, Dirección General de Recursos Pesqueros - Subdirección General de Inspección Pesquera

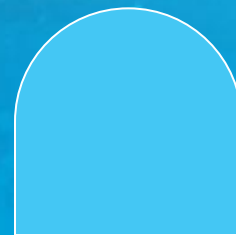
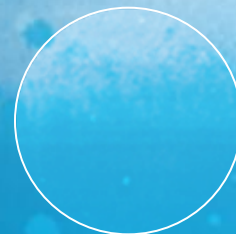




MS INSPECTION SERVICES MCS: THE SEA COMPONENT



- Surveillance and inspection
- Monitoring of observers
 - Authorisation and identification
 - Licenses
 - Activities, catch and gear
 - Control of access - zones, closed seasons, quotas, gear restrictions
 - Marine safety and pollution
 - National requirements

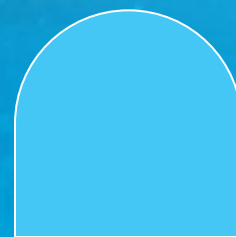
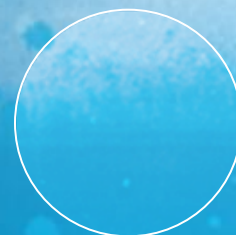




MS INSPECTION SERVICES MCS: THE AIR COMPONENT



- Often the first response mechanism surveillance
- Flexible, fast and highly visible - high deterrence value
- Rapid information collection and dissemination
- Multi-role simultaneously - eg, anti-poaching and environmental monitoring



PROBLEMS AND SOLUTIONS



Some problems:

- National MCS tends to be reactive rather than proactive
- Incomplete picture of global activity
- Insufficient means and/or unclear mandate



PROBLEMS AND SOLUTIONS



- International cooperation required for controlling a global economic activity both on EU level and ICCAT level
- CFCA organizes operational cooperation between Member States:
 - Pooling of data and intelligence
 - Joint risk analysis
 - Pooling of means
 - Coordination of training of inspectors
 - Coordination of joint deployment of means
 - Provide cost effectiveness

CORE TASK OF THE CFCA

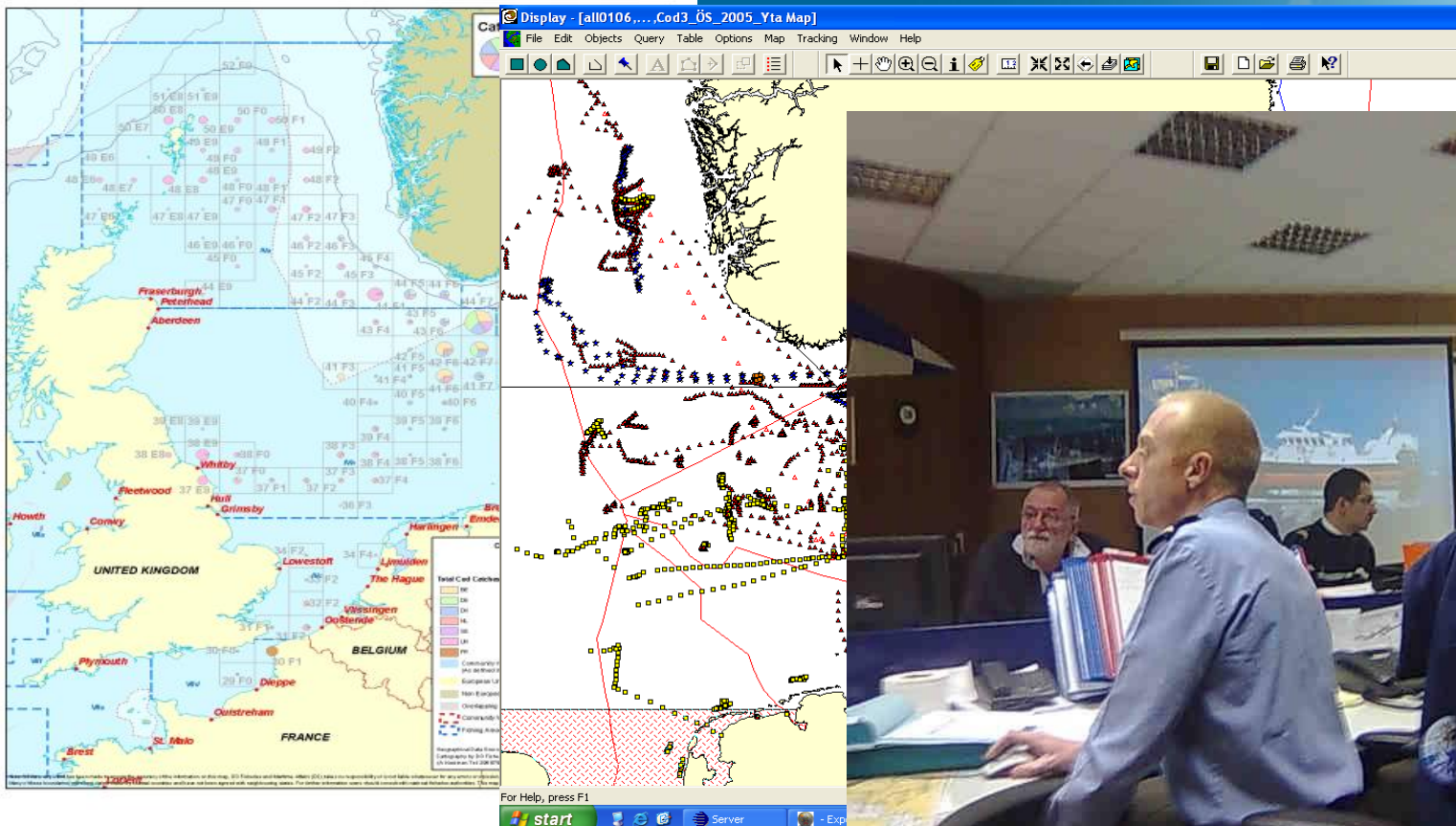
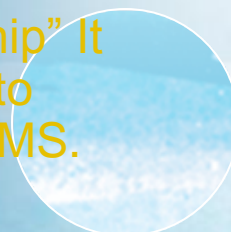


- Adoption of Joint Deployment Plans for coordination of pooled national means such as ships, aircraft and inspectors
- CFCA Joint BFT Coordination Centre in Vigo is manned by CFCA staff and national coordinators seconded by MS



CORE TASKS OF THE CFCA

The joint coordination centre in charge: “only one captain on the ship” It guides the operations of national means from several MS in order to ensure uniform and effective application of the applicable rules by MS.





The Proactive Role of
Coast Guard Services is
facilitated through international
cooperation !



THANK YOU!



www.cfca.europa.eu

